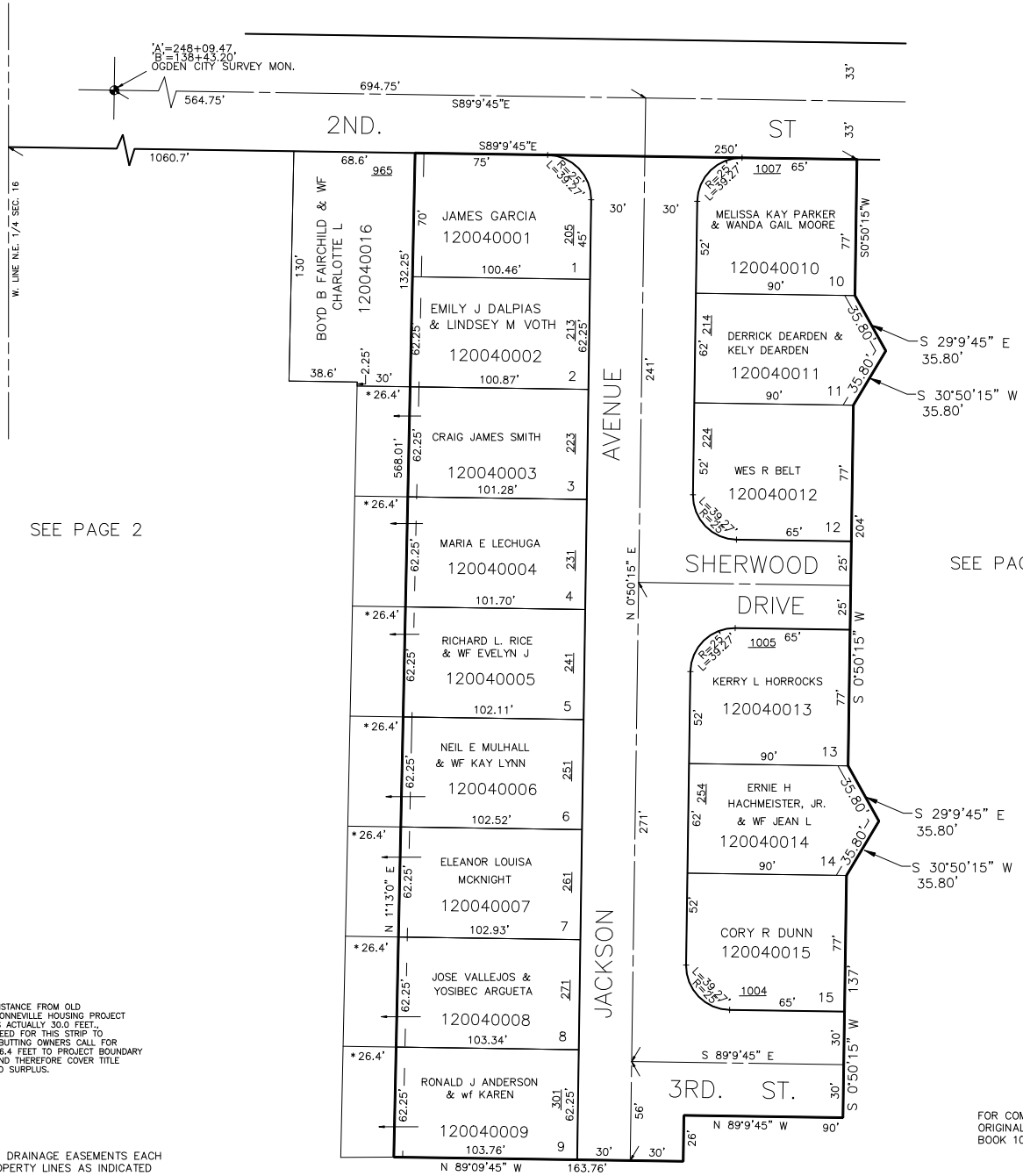


PART OF N.E. 1/4 OF SECTION 16, T.6N., R.1W., S.L.B.&M.
SHERWOOD PARK ADDITION NO. 1

IN OGDEN CITY
SCALE 1" = 50'

TAXING UNIT: 25

SEE PAGE 19



SEE PAGE 2

SEE PAGE 5

* NOTE: DISTANCE FROM OLD BONNEVILLE HOUSING PROJECT IS ACTUALLY 30.0 FEET. DEED FOR THIS STRIP TO ABUTTING OWNERS CALL FOR 26.4 FEET TO PROJECT BOUNDARY AND THEREFORE COVER TITLE TO SURPLUS.

5' UTILITY & DRAINAGE EASEMENTS EACH SIDE OF PROPERTY LINES AS INDICATED BY DASHED LINES EXCEPT AS OTHERWISE SHOWN.

FOR COMPLETE ENG DATA SEE ORIGINAL DEDICATION PLAT IN BOOK 10, PAGE 31 OF RECORDS.

SEE PAGE 7